



Città di Eboli

Provincia di Salerno

OGGETTO:

PIANO URBANISTICO ATTUATIVO SANT' ANDREA

NTA parte III, scheda n°4, PRG
NTA parte I, artt.54 e 55, PRG
art.7 comma 2 LR 1/2011, Piano Casa
DGC n.346 12/10/2010
DCC n.13 26/04/2012

PROGETTISTA:

DIRETTORE DEI LAVORI:

COMMITTENTE:

STATO DI FATTO

SUB-AMBITO
N. 12

USO DEL SUOLO

Elaborati grafici:

RIFERIMENTO ELABORATI

DEFINITIVO



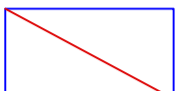

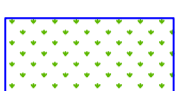
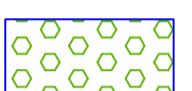
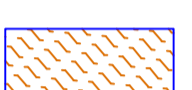
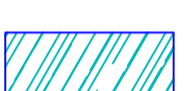
DATA Ottobre 2013
SCALA 1:1000

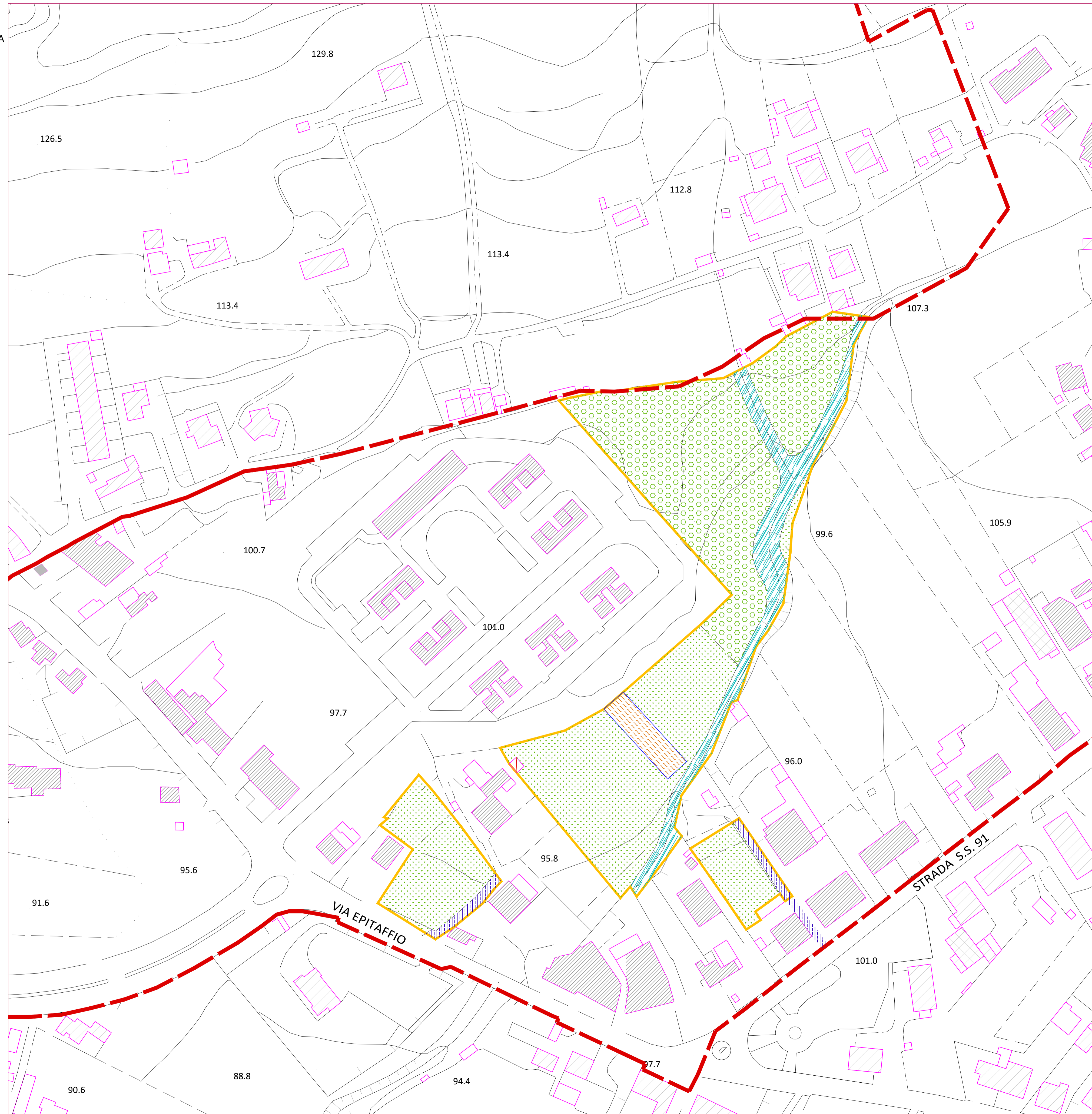
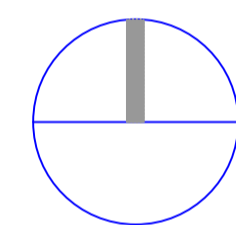
Tav. 3 bis

Studio Tecnico Magliano

INGEGNERIA + URBANISTICA + ARCHITETTURA
Via Ponte Barbieri 54, cap 84020 Campagna (SA), Tel: 0828/44122
e-mail: carminemagliano@alice.it



-  Perimetrazione PUA
-  Perimetrazione Sub-Ambito
-  Baracca
-  Accesso asfaltato
-  Seminativo
-  Oliveto
-  Vigneto
-  Canale con vegetazione ripariale



Inquadramento Pua S.Andrea: base aerofotogrammetrica

scala 1:5000

