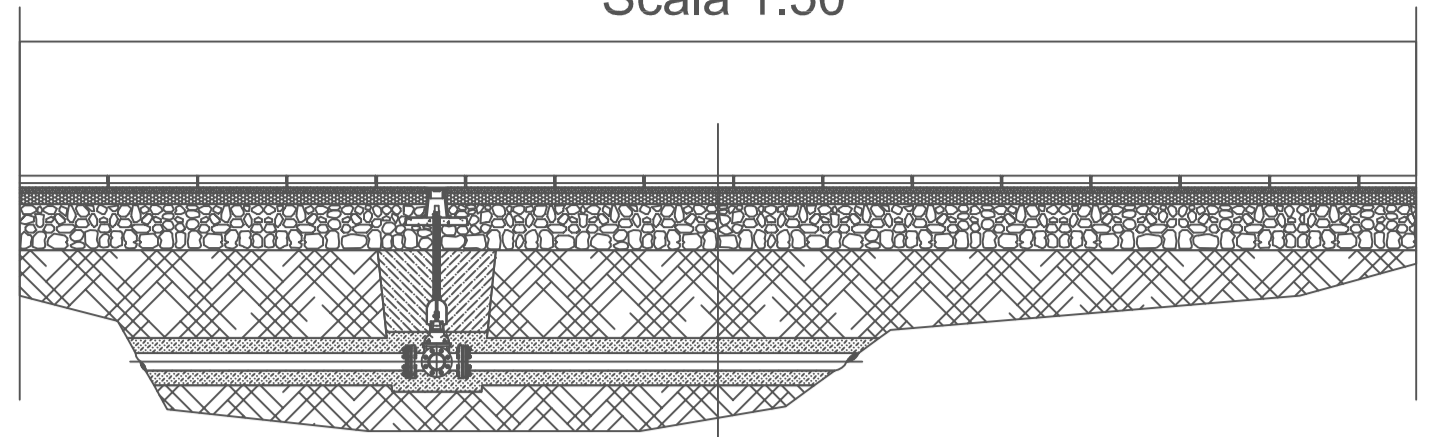
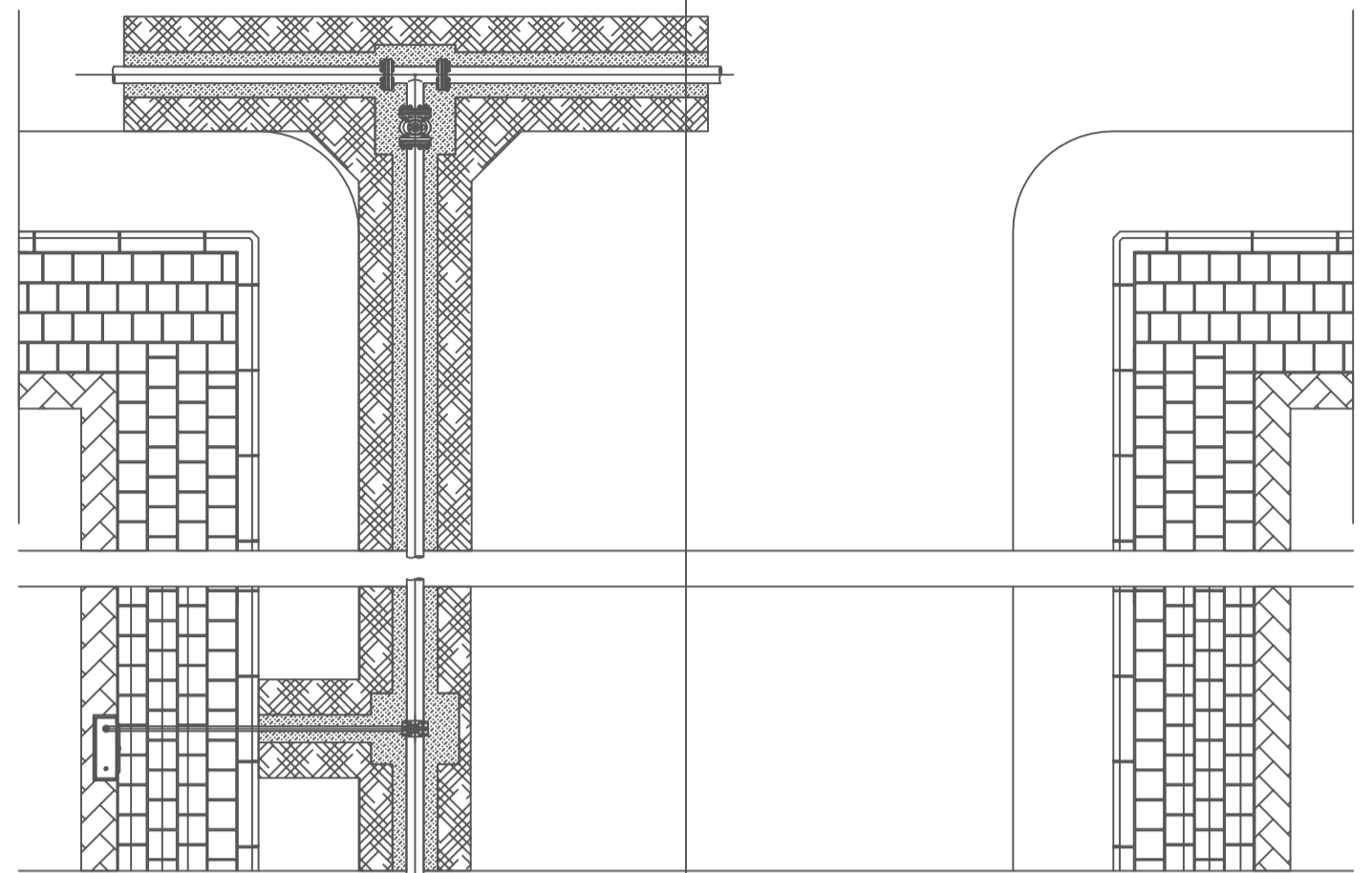


PIANTE E SEZIONI STRADALI TIPO

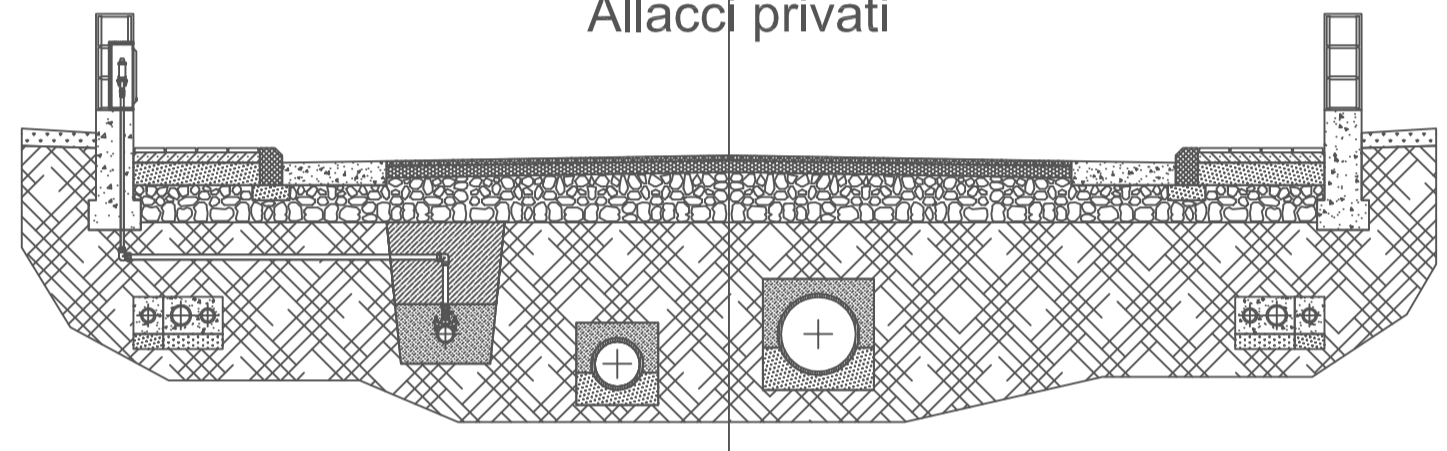
Scala 1:50



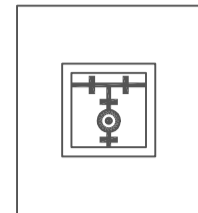
Derivazione con saracinesca d'intercettazione



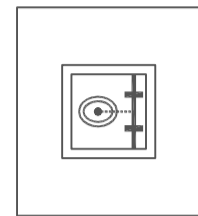
Allacci privati



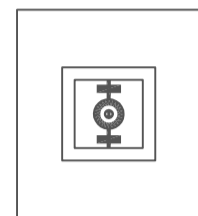
LEGENDA



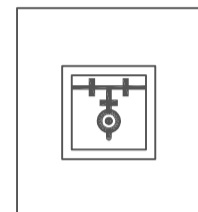
Derivazione  
- saracinesca sottosuolo



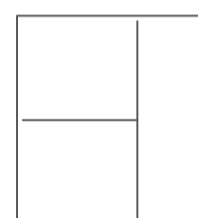
Idrante antincendio  
- saracinesca sottosuolo



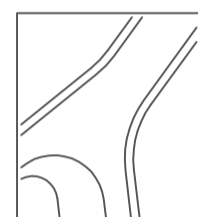
Valvola intercettazione  
- saracinesca sottosuolo



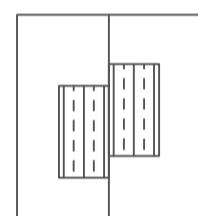
Pozzetto di scarico



Condotta fognaria



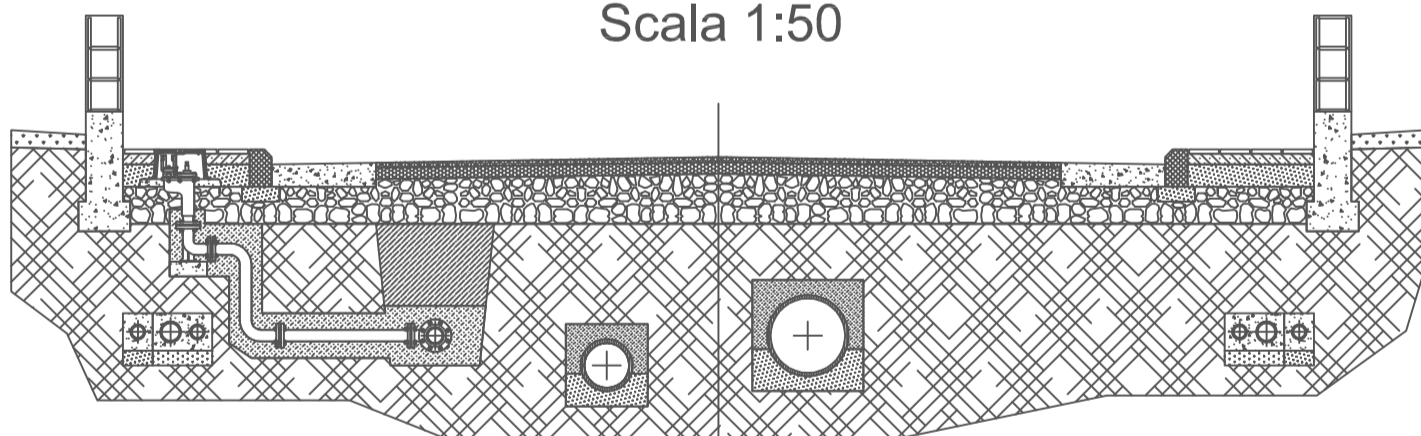
Aree viabilita'  
- sedime stradale  
- marciapiedi



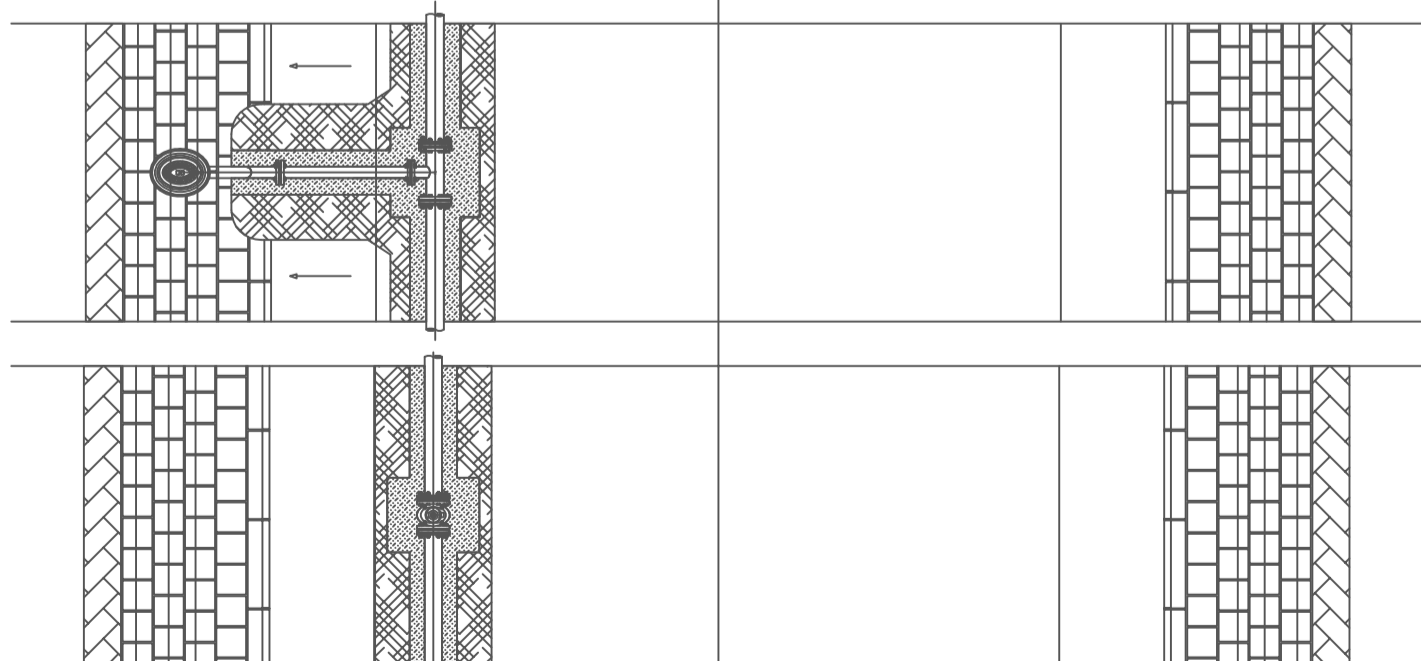
Lotti edificabili  
- perimetri lotti  
- perimetri edifici

PIANTE E SEZIONI STRADALI TIPO

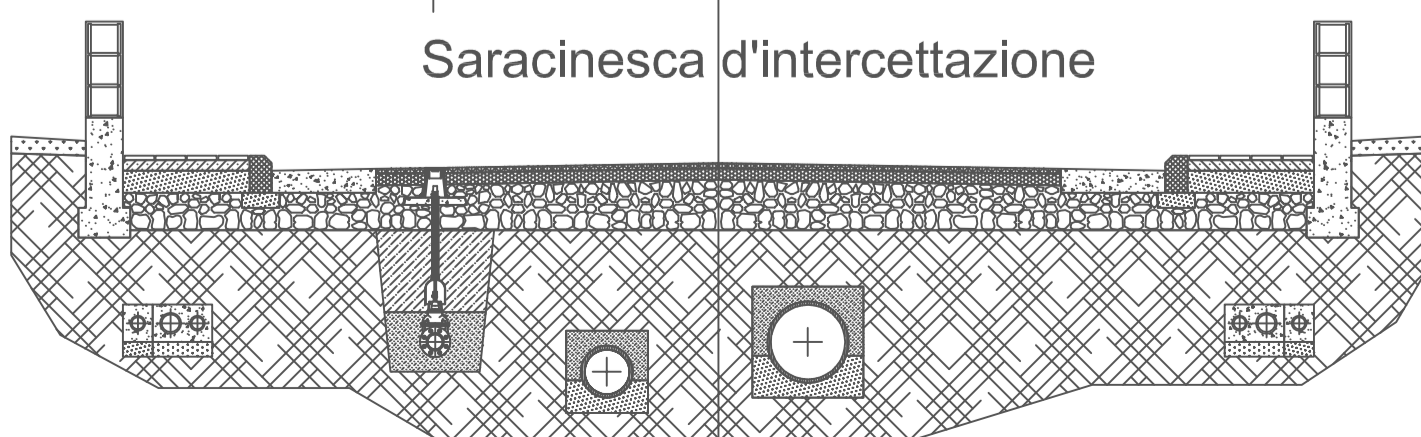
Scala 1:50



Derivazione idrante antincendio



Saracinesca d'intercettazione



TAV.  
**12d**

COMUNE DI EBOLI  
(Provincia di Salerno)

PIANO URBANISTICO ATTUATIVO  
di iniziativa privata

**"AMBITO TRIDENTUM"**  
Scheda n.5 "Rione Pescara"-Sub Ambiti

ELABORATI DI PROGETTO:

Rete idrica - Planimetria e Sezioni tipo scala 1:50

PROGETTISTA:

Arch. Mariateresa D'Arco

STUDIO TECNICO DI PROGETTAZIONE  
Via C. A. Dalla Chiesa n.11 - 84025 Eboli (SA), tel./fax 0828 368385 - cell. 338 8306833  
e-mail: arecdarc@tiscali.it

COMMITTENTI: Sigg.re D'Aniello Adriana e Clelia

RESPONSABILE Unico del procedimento: Ing. Lucia Rossi

VISTO:

DATA:

marzo 2012

IMPRESA: